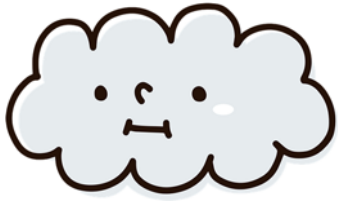


Name _____



Sky Sleuth: Name That Cloud

Every cloud tells a weather story. Some warn of approaching storms, others drift lazily on sunny days, and a few streak the sky like brushstrokes. Today, you will become a Sky Sleuth, solving cloud mysteries by matching each description to the correct cloud type: **Cumulus**, **Cirrus**, **Stratus**, or **Nimbus**. Read the mini weather reports and write the cloud type below each.

- A. *"A bright, warm afternoon with scattered white puffs floating overhead."*
- B. *"All day gray skies and a light mist in the air."*
- C. *"The horizon is lined with thin white streaks high above, ahead of tomorrow's rain."*
- D. *"The air feels heavy as thick, dark clouds roll in, bringing heavy showers."*

SKY SKETCH: Draw your favorite cloud type in the box below. Label it with its height in the atmosphere (low, medium, high), the typical weather it brings, and one fun fact about it.