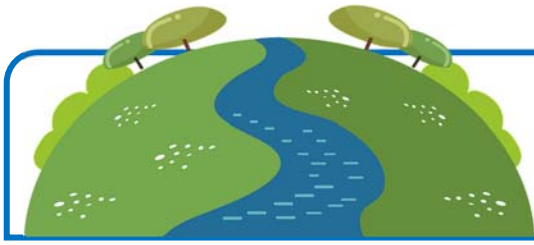


Name _____



United Kingdom Landscape

Directions: Read the passage carefully. Then answer the analysis questions that follow.

The United Kingdom has a varied physical landscape shaped by mountains, rivers, plains, and long stretches of coastline. In the north and west, the land rises into **highlands**, including well known ranges such as the **Scottish Highlands** and the mountains of **Wales**. These areas have rugged peaks, deep valleys, and cooler temperatures. In contrast, the lowlands of southern and eastern England contain gentler hills and fertile plains where many towns, farms, and transportation routes are found.

Because the UK is made up of islands, its **coastal landscape** is especially important. The coastline includes sandy beaches, steep cliffs, and rocky headlands shaped by wind and waves. Places such as the white cliffs near Dover or the dramatic shores of Northern Ireland show how powerful coastal erosion can be. These coasts also support trade, fishing, and tourism, making them vital to the country's economy.

The United Kingdom is also crossed by several **major rivers**. The **River Thames** flows through London and has served as a transportation route for centuries. The **River Severn**, the longest river in the UK, moves through Wales and western England. Other rivers, including the Clyde and the Trent, shape the valleys and lowlands around them. Together, these physical features help define the natural regions and lifestyles found across the UK.

1. What is the main difference between the highlands and lowlands of the United Kingdom?
2. Why are coastal landscapes important to the UK?
3. Name two major rivers mentioned in the passage.
4. How does the landscape of northern and western UK differ from that of southern and eastern UK?
5. Why might lowland areas be good places for towns and farms?
6. How do rivers like the Thames and Severn influence human activity?
7. What does the passage suggest about the relationship between geography and the economy?
8. Explain how coastal erosion shapes parts of the United Kingdom.
9. What physical feature would you most like to visit in the UK and why?
10. Based on the passage, describe how mountains, coasts, and rivers help create different regions within the country.