

Robots - From Past to Present

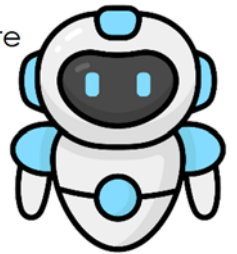
Robots are machines that can do tasks for people. A robot usually has a body made of metal or plastic. Many robots also have motors and sensors. Motors help robots move, and sensors help them "feel" or notice things around them.

The idea of robots has been around for hundreds of years. Long ago, inventors built simple machines that could play music or draw pictures. These early robots could not think for themselves. They just repeated the same movements over and over again.

In the 1900s, factories began using robots to build cars and other products. These robots were very strong and fast, but they still could not make decisions. They were programmed by humans to do one job only.

Today, robots are much more advanced. Some can walk, fly, or swim. Others can work side by side with humans in hospitals, warehouses, and even in space. Modern robots can use computer programs to complete many different tasks. Some even use artificial intelligence (AI) to learn new skills.

Robots have come a long way, but they all share one thing in common: they are machines built to help humans do work.



Comprehension Questions

1. What do motors help robots do?

- a) Make decisions b) Build cars c) Sense the world d) Move

2. The first robots could:

- a) Think for themselves b) Work in space
c) Repeat simple movements d) Learn new skills

3. Robots in factories during the 1900s were used mostly for:

- a) Drawing pictures b) Building cars c) Teaching children d) Flying in space

4. Which of the following is NOT true about robots today?

- a) Some can swim b) Some use AI
c) They can never work with humans d) They can complete many tasks

5. What is one-way early robots were different from today's robots?

6. Why do you think humans built robots in the first place?

7. Write one example of a job a robot might do in the future.