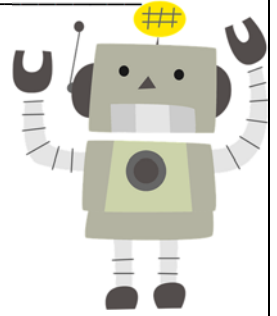


Name \_\_\_\_\_



## That's So UnfairBot!

Artificial Intelligence (AI) makes choices every day - what video you see next, what ad appears online, or even which job applicant gets noticed first. But AI doesn't "feel" fairness the way people do. It learns from data that can contain bias or gaps.

In this activity, you'll act as a **Fairness Investigator**. For each short case study, read how the AI made its decision. Then, rate how fair it seems on a **Fairness Scale** from **1 (Very Unfair)** to **5 (Very Fair)**. Explain why you gave that rating, and suggest one change that could make the AI's decision more fair for everyone.

**Case Study 1: The Scholarship Selector** - A university uses AI to choose which students will receive scholarships. The AI looks at school grades, test scores, and club memberships.

After a few years, the school notices a pattern: students from wealthier schools are chosen more often. The AI's data didn't include information about which schools had fewer resources or opportunities.

**Your Tasks:**

**Fairness Score (1-5):** \_\_\_\_\_

**Why did you give this score?**

---

---

**One change that could make it fairer:**

---

---

---

### Case Study 2: The Predictive Policing Program

A city installs an AI tool to predict where crimes might happen so police can patrol those areas more often. The system uses crime reports from the past ten years.

Over time, the AI sends officers most often to the same neighborhoods - mostly low-income areas - even when the number of crimes there goes down. Communities start to feel watched and mistrusted.

**Your Tasks:**

**Fairness Score (1-5):** \_\_\_\_\_

**Why did you give this score?**

---

---

**One change that could make it fairer:**

---

---

---