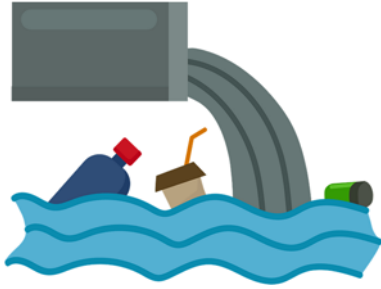


Name _____



River Rescue

Directions: Read the passage below carefully. Think about how the issues in the passage connect to things happening in the wider world: your community, your country, or even globally. Respond to the prompts at the end. Be specific and use examples of real events, community concerns, or current issues.

Lena noticed that her town's river, once clear and full of fish, had become polluted with trash and cloudy water. Local families who once swam and fished there now avoided it, and some businesses that depended on the river, like a small kayak rental shop, were struggling. At a community meeting, people debated solutions. Some suggested organizing clean-up days, while others wanted stricter rules for factories upstream. Lena thought that schools could help by teaching kids how to take care of the environment. The mayor promised to look into new laws, but many agreed it would take everyone's effort to restore the river. Even though the problem seemed overwhelming, Lena believed that small actions could add up to big change.

1. How does Lena's town's problem connect to global environmental issues?

2. Can you think of a current event or community issue that is similar? Explain the connection.

3. What solutions from the passage could work in your own community, and why?
