

Name _____

Annotations - Understanding AI Systems

Instructions - Read each passage carefully. As you read, you will see blanks like this: (____). In each blank, write the correct label: **I = Input, P = Processing, O = Output, F = Feedback, M = Model**

AI in Medical Imaging

A hospital system scans an X-ray or MRI image and sends it to the AI system (____).

The AI compares the image to thousands of examples in its database to detect patterns linked to disease (____).

The trained diagnostic model predicts whether the scan shows something abnormal (____).

The system provides a report to the doctor that includes possible conditions or concerns (____).

Doctors' corrections and patient outcomes are added back to the system to improve accuracy (____).

AI in Online Shopping

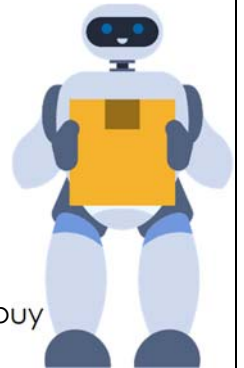
A customer searches for "running shoes" on an e-commerce site (____).

The AI reviews past searches, clicks, and purchases to identify patterns (____).

The recommendation model predicts which shoes the customer is most likely to buy (____).

The website displays personalized product suggestions on the screen (____).

When customers buy or ignore items, the system adjusts its recommendations in the future (____).



AI in Smart Farming

Sensors in the soil collect data about moisture levels and nutrient content (____).

The system analyzes the data along with weather forecasts to predict crop needs (____).

The farm's AI model suggests the best schedule for watering and fertilizing (____).

Farm equipment automatically waters and distributes fertilizer based on the schedule (____).

Data on crop yield and farmer adjustments are added back to make the system more reliable (____).