

Name _____

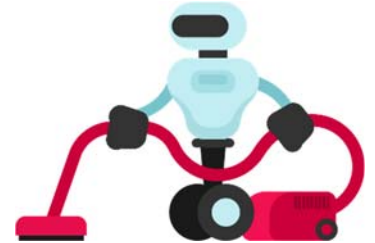
Error-Injected Text - Understanding AI Systems

Below are five sentences that describe how an AI system works. Each sentence has a **mistake** - something is out of order, mislabeled, or described incorrectly.

Your job is to: **Find the error** in each sentence. **Rewrite the sentence correctly** so it explains the part of the AI system properly.

Sentences with Errors

1. The system produces an **output** before it processes the data.



Corrected: _____

2. The **feedback loop** turns spoken words into text by breaking them into tokens.

Corrected: _____

3. The **dataset** is the trained decision-making part of the system that predicts answers.

Corrected: _____

4. Once the system has chosen a response, it uses **processing** to play the answer out loud through the speaker.

Corrected: _____

5. The **model** gathers ratings and corrections from users to improve over time.

Corrected: _____

Reflection Question - Why do you think spotting errors in explanations is a good way to learn how AI systems work?