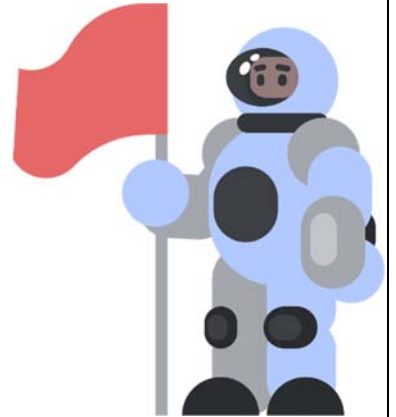


Name _____

Division with Remainders: Space Mission Adventure

Directions: Solve each problem. Show your work and include your **quotient** and **remainder** in your answers.



1. Spacesuit Storage - The space station has **94 spacesuits** to place into lockers that hold **8 suits each**. How many lockers will be completely filled, and how many suits will be left over?

2. Moon Rock Samples - Scientists collected **157 moon rocks** and want to sort them into **12 sample boxes**. How many rocks will each box get, and how many will not fit?

3. Launch Crew Supplies - Each rocket supply pod can carry **15 crates**, and there are **238 crates** to send. How many pods can be completely loaded, and how many crates remain?

4. Satellite Pieces - Mission Control needs to ship **312 satellite parts** into **26 transport containers**. How many parts will each container hold, and are any left?

5. Galaxy Candy Rations - The astronauts have **425 space candies** to divide evenly among **38 crew members**. How many candies will each astronaut get, and how many are left floating around?

6. Planet Samples - A probe brought back **289 alien soil samples**. Each tray holds **24 samples**. How many trays are filled, and how many samples are left?

7. Star Charts - There are **176 new star charts** to store in folders that hold **14 charts each**. How many full folders can be filled, and how many charts will remain?