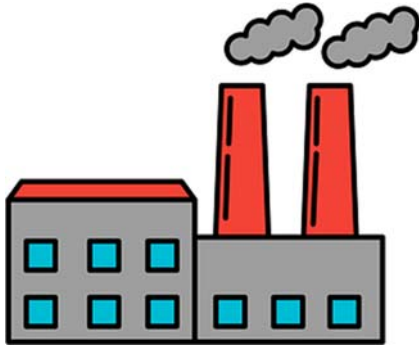


Name _____



Factory Life

Directions: Read the passage below about life in a 19th-century textile factory. Then, answer the multiple-choice questions that follow by selecting the best answer (A-D).

In the early 1800s, the Industrial Revolution transformed small towns into bustling factory cities. Inside textile mills, hundreds of workers-many of them children-labored long hours to spin and weave cloth. The air inside the mills was hot and filled with cotton dust. Machines thundered constantly, leaving workers with little chance to rest or speak.

Factory owners demanded speed and discipline to keep production high. Workers who slowed down could lose wages or even their jobs. Accidents were common, as loose clothing or tired hands could get caught in machinery. Despite these dangers, many families depended on factory pay to survive. Over time, reformers began calling for laws to protect workers, limit child labor, and improve conditions in the mills.

1. What was the main purpose of textile factories during the Industrial Revolution?
 - A. To grow and sell cotton
 - B. To build railroads and bridges
 - C. To train workers for farm work
 - D. To weave and produce cloth
2. Which statement best describes the working conditions inside the mills?
 - A. Loud, hot, and dangerous
 - B. Safe and comfortable
 - C. Clean and well-ventilated
 - D. Quiet and peaceful
3. What happened to workers who slowed down or made mistakes?
 - A. They received time off
 - B. They were rewarded for effort
 - C. They could lose pay or jobs
 - D. They were promoted to managers
4. Why did many families continue working in factories despite harsh conditions?
 - A. They enjoyed the work
 - B. They had few other ways to earn money
 - C. They received free housing
 - D. They were required by law
5. What was one important result of reformers' efforts during this period?
 - A. Workers were forced to work longer hours
 - B. More children were hired to meet factory needs
 - C. Laws were passed to improve safety and protect workers
 - D. Factories were moved to rural areas