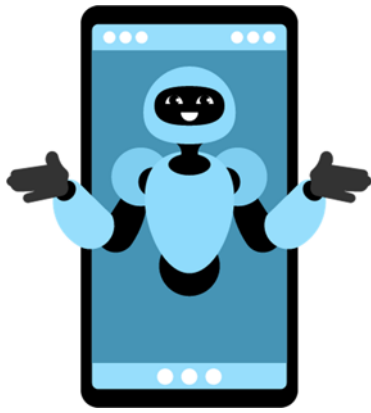


Name _____



AI Evidence Check

Directions: Read the op-ed excerpt carefully. As you read, underline or highlight each piece of **evidence** the author uses to support their argument. Answer the questions that follow, evaluating the **strength**, **relevance**, and **credibility** of the evidence. Use specific examples from the text in your responses.

Op-Ed: The Ethical Crossroads of AI

Artificial intelligence (AI) is advancing at a pace that challenges our ability to regulate it responsibly. Supporters argue that AI will improve healthcare, education, and efficiency in nearly every industry. Yet we must ask: at what cost?

For example, a recent report from a nonprofit research institute found that nearly 40% of companies using AI for hiring showed measurable bias against women and minority applicants. Another study by a major tech firm suggested that advanced AI systems could surpass human intelligence within the next three decades, raising questions about control and accountability.

Skeptics point out that these studies often come from organizations with vested interests. A technology company that profits from AI has little incentive to emphasize risks, while advocacy groups may exaggerate dangers to attract funding. What is clear, however, is that the stakes are high: AI will shape economies, politics, and personal lives in profound ways. We must demand transparent, credible evidence as the basis for ethical regulation.

1. Identify two pieces of evidence the author uses to support concerns about AI.
2. Evaluate the **strength** of the evidence: Does it convincingly support the author's claims? Why or why not?
3. Evaluate the **relevance** of the evidence: How directly does it connect to the ethical concerns about AI?
4. Evaluate the **credibility** of the evidence: Are the sources reliable? What biases might exist?
5. Based on the op-ed, do you think the author effectively balances evidence with caution about credibility? Explain your reasoning.