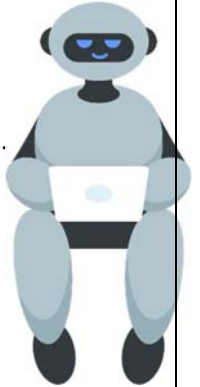


Name _____

Dear AI Designer

You've just been hired as an **AI Ethics Consultant** (fancy title, no pressure). Below are letters from inventors who've created new AI systems. Each one wants your advice. Read carefully, then respond to each letter with two parts:



1. **Your Verdict:** Is the AI system **Helpful, Unhelpful, or Needs Human Help?**
2. **Your Advice:** Write 2-3 sentences explaining what the designer should change or consider next time.

Letter 1: The Smart Hall Monitor

Dear Consultant,
I've created an AI hallway camera for schools. It automatically records every student who walks too slowly, blocks traffic or talks too loudly. Teachers love the reports! Some students say it feels like living in a spy movie.

- Sincerely, *The Discipline Data Team*

Your Verdict: _____ **Your Advice:** _____

Letter 2: The Robo-Recruiter

Dear Consultant,
My company's hiring app uses AI to filter résumés. It learns from our top employees' profiles to find similar applicants. We've noticed it keeps rejecting people who went to smaller colleges. Is that a glitch or a feature?

- Best, *The HR Automation Lab*

Your Verdict: _____ **Your Advice:** _____

Letter 3: The Virtual Pet Therapist

Dear Consultant,
We've built a chatbot that offers therapy to people feeling lonely. It gives great advice and remembers what users say. Some people talk to it for hours instead of reaching out to friends. Should we make it more realistic or limit its responses?

- Thanks, *Team FeelBot*

Your Verdict: _____ **Your Advice:** _____

Letter 4: The Predictive Principal

Dear Consultant,
Our AI system predicts which students are likely to fail a class based on attendance, grades, and behavior. It emails teachers with warnings - but some teachers say it makes them lower expectations for certain students.

- Respectfully, *SchoolTech Innovations*

Your Verdict: _____ **Your Advice:** _____