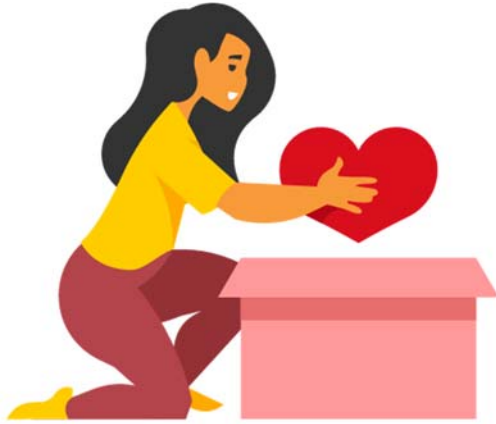


Name _____



Contrast Polisher

Directions: Read the short persuasive essay below. It uses casual contrast words and phrases like **in spite of** and **but**. Rewrite the essay to make it more formal by replacing them with **despite** phrases where appropriate. Make sure the tone sounds polished and academic.

Many people say that volunteering takes too much time, **but** the benefits it brings are worth the effort. **In spite of** busy schedules, students can still find time to help in their communities. It is easy to think that one person cannot make a difference, **but** every act of kindness creates a ripple effect. **In spite of** limited resources, volunteers often find creative ways to support others. Community service should be encouraged in schools because it helps students grow as citizens and builds compassion for others.
