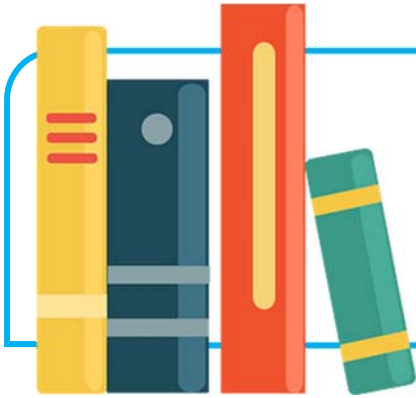


Name _____



Balance Check

Directions: Read the model paragraph below. Highlight or underline all **comparison points** in one color and all **contrast points** in another. Then rate how balanced the paragraph is.

Both the school library and the public library provide quiet spaces where students can read and study. They each offer access to books, computers, and helpful staff members. However, the public library stays open longer and provides more programs for different age groups. Unlike the school library, it also offers community events that take place on weekends. While the two libraries share a focus on learning and literacy, the public library serves a wider audience with more flexible hours.

Rate the Balance

Does the paragraph have an even mix of comparison and contrast points?

Circle one: **Balanced** / **More Compare** / **More Contrast**

Explain your choice briefly:
