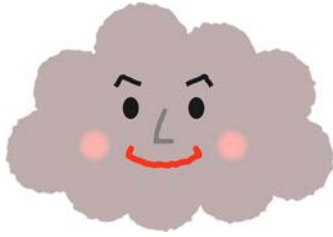


Name _____



Sorting by Cloud Family

Below are "cloud families." Each cloud family has a cloud name and a short description. Your task is to **sort each of them into the correct family group**:

- **Cirrus Family** (wispy, hair-like, ice crystal clouds) - **CIF**
- **Stratus Family** (layered, blanket-like clouds) - **SF**
- **Cumulus Family** (puffy, heap-like clouds) - **CUF**
- **Nimbus Family** (rain-producing clouds) - **NF**

Write **CIF**, **SF**, **CUF**, or **NF** before each number.

1. **Cirrus** - Thin, wispy streaks high in the sky, made of ice crystals.
2. **Altostratus** - White or gray patches of puffy clouds, larger than cirrostratus.
3. **Stratus** - Low, uniform gray cloud that looks like fog but doesn't touch the ground.
4. **Cumulonimbus** - Towering giant with anvil top, brings thunderstorms and heavy rain.
5. **Cirrocumulus** - Small white patches arranged like fish scales, very high up.
6. **Nimbostratus** - Dark, thick blanket of cloud bringing steady rain or snow.
7. **Cirrostratus** - Transparent, sheet-like cloud that creates halos around the sun/moon.
8. **Altostratus** - Grayish-blue sheets that cover the sky, letting little sunlight through.
9. **Cumulus** - Puffy, cotton-like clouds often seen in fair weather.