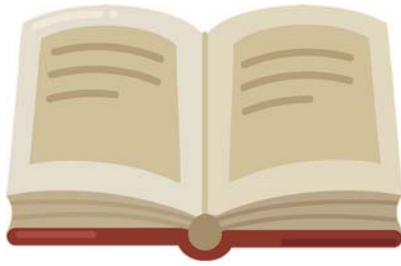


Name \_\_\_\_\_



## Author Critique

**Directions:** Read the passage below carefully. Think about the author's **message** (what they want the reader to believe, feel, or reflect on). Write a short critical response (1-2 paragraphs) where you evaluate the **effectiveness of the author's choices**, such as tone, imagery, word choice, or point of view. Use at least one piece of **textual evidence** to support your critique.

### *Excerpt Inspired by George Orwell's Animal Farm\**

"All animals are equal, but some animals are more equal than others." The pigs had begun to walk upright, carry whips, and trade with humans. What once was a revolution against tyranny had become another system of oppression. The animals watched in silence, unable to tell the difference between their former enemies and their new rulers.

**Critical Response Prompt:** Do you think Orwell's choice to use animals to tell this story makes his message about power and corruption more powerful or less powerful? Why? Critique the **effectiveness** of his language in delivering the message. Support your response with at least one detail from the passage.