

Name _____

Riddle Match-Up - Human Thinking vs. AI Thinking

Goal: Learn how humans and AI think differently when solving riddles.

- **AI** is usually good at logic and patterns.
- **Humans** are often better at wordplay, jokes, and double meanings.

Instructions

1. Read each riddle.
2. Decide: **Would an AI solve it best, or would a human solve it best?**
3. Write your answer: **AI** or **Human**.
4. Be ready to explain why you chose it!

Riddles

1. *"I'm tall when I'm young, and I'm short when I'm old. What am I?"*

Answer: _____

2. *"What has a face and two hands but no arms or legs?"*

Answer: _____

3. *"What gets wetter the more it dries?"*

Answer: _____

4. *"Why can't a nose be 12 inches long?"*

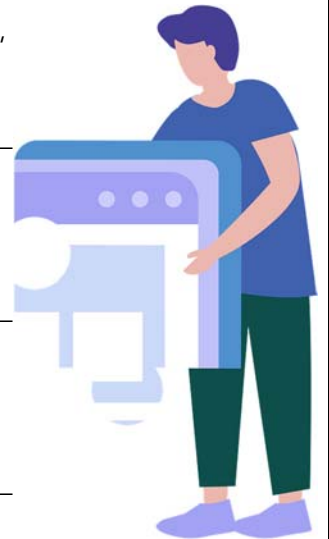
Answer: _____

5. *"I'm always in front of you but can't be seen. What am I?"*

Answer: _____

6. *"Why did the computer go to the doctor?"*

Answer: _____



Reflection: Which riddles were **logic-based**?

Which riddles were more about **jokes or wordplay**?